

# Trentham

## Educational Programmes for Primary Schools



Get  
active in  
the great  
outdoors

[trentham.co.uk](http://trentham.co.uk)

# More to explore at Trentham

Head out of the classroom for a wide range of enriching and fun learning experiences at Trentham.

Our range of education programmes offer flexible half day options, either as a Self-Led or Ranger-Led sessions (90 mins).

Recommended timing is from 10am to 2:30pm, but earlier or later arrival and departures can be arranged.

## Prices:

**Self-Led £6 | Ranger-Led £8**

Includes access to adventure play area, barefoot walk, hide and speak maze, beaver activity pack and a vast array of wildlife to discover!

Additional activities include: boat cruise, train ride, Fairy Quest, Disc Golf and pre-paid ice cream.



## Flowers & Pollination

Science, Key Stage 1  
(National Curriculum relevant Yr. 2)

**Exploring the natural process of pollination and how flowers and pollinators work together.**

Available as a **Self-Led** or **Ranger-Led** programme.



## Plants & Growth

Science, Key Stage 2  
(National Curriculum relevant Yr. 3)

**Exploring the world of plants from grasses to trees, the various parts of a plant and how do plants grow.**

Available as a **Self-Led** or **Ranger-Led** programme.



## Life & Food Chains

Science, Key Stage 1 & 2 Programmes available  
(National Curriculum relevant Yr. 1, 2, 4, 6)

**Exploring food chains and a great opportunity to explore the world of mini-beasts/invertebrates.**

Available as a **Self-Led** or **Ranger-Led** programme - Pond Dipping and Minibeasting option **only** available as Ranger-Led.

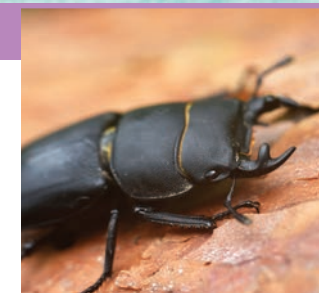


## Habitats & Adaptation

Science, Key Stage 2 Programme  
(National Curriculum relevant Yr. 6)

**Learn about a variety of vertebrate and invertebrate habitats at Trentham and discover how animals have amazing adaptations to survive and thrive.**

Available as a **Self-Led** or **Ranger-Led** programme - Pond Dipping option **only** available as Ranger-Led.



## Beavers & Rewilding

Science, Key Stage 1 & 2 Programmes available  
(National Curriculum relevant Yr. 1-6)

**Focused on beaver adaptations to their habitat and their habitat requirements.**

**Only** available as a **Ranger-Led** programme.



## Natural Art

Art, Key Stage 1 & 2 Programmes available  
(National Curriculum relevant Yr. 1-6)

**Natural art activities, experimenting with different shapes, patterns, colours, and textures in nature.**

Available as a **Self-Led** or **Ranger-Led** programme.





## PROGRAMMES INCLUDE...

- Flowers & Pollination
- Plants & Growth
- Life & Food Chains
- Habitats & Adaptation
- Beavers & Rewilding
- Natural Art

For further enquiries:

Tel: **01782 646646**

or Email: [education@trentham.co.uk](mailto:education@trentham.co.uk)

**Free**  
**CAR & COACH**  
**Parking**

**Stone Road, Trentham, Staffordshire**  
**Sat Nav Postcode ST4 8JG**